



icertech

Quality Chilled Packaging

PERFORMANCE SUMMARY



PERFORMANCE SUMMARY

THE TESTING

IcerTech conducted in-house testing to qualify their range of chilled packaging solutions, demonstrating their suitability to meet the requirements of its customers within the UK. The testing was performed under 'ambient' conditions of approx. 20°C. A summary of the performance of each solution during the testing is given in the table below:

Box	Coolants	Product Simulant	Time Acheived Between 2°C and 8°C
Mini	2 x 0.5L Easi-Chill	1 water bottle	37 Hours (1.5 Days+)
Small	2 x 1L Easi-Chill	4 water bottles	64 Hours (2.5 Days+)
Midi	2 x 1L Easi-Chill	6 water bottles	60 Hours (2.5 Days+)
Medium	4 x 1L Easi-Chill	12 water bottles	73 Hours (3 Days+)
Large	6 x 1L Easi-Chill	18 water bottles	86 Hours (3.5 Days+)

POINTS TO NOTE

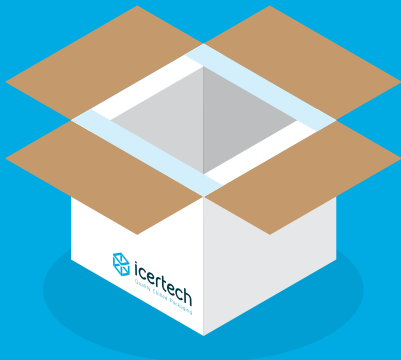
- Performance will vary from the results shown above, for example a small volume pharmaceutical product will achieve a lesser time between 2°C and 8°C, whereas a large volume food product may achieve a greater time.
- IcerTech recommends that for journeys with an average temperature of no more than 10°C that the amount of coolants to be used, as indicated above, is halved.
- Ultimately the onus is on the customer to ensure that adequate performance is achieved, and IcerTech will not accept any extended liability. As a qualification, this report proves that the solutions will work for the purpose intended, but where necessary the customer must perform their own validation trials.

[A full qualification report is available on request.](#)

MINI INSULATED BOX

Average Room Temperature: 21.3°C

Product: 1 x 330ml Water Bottles



Mini Insulated Box

+

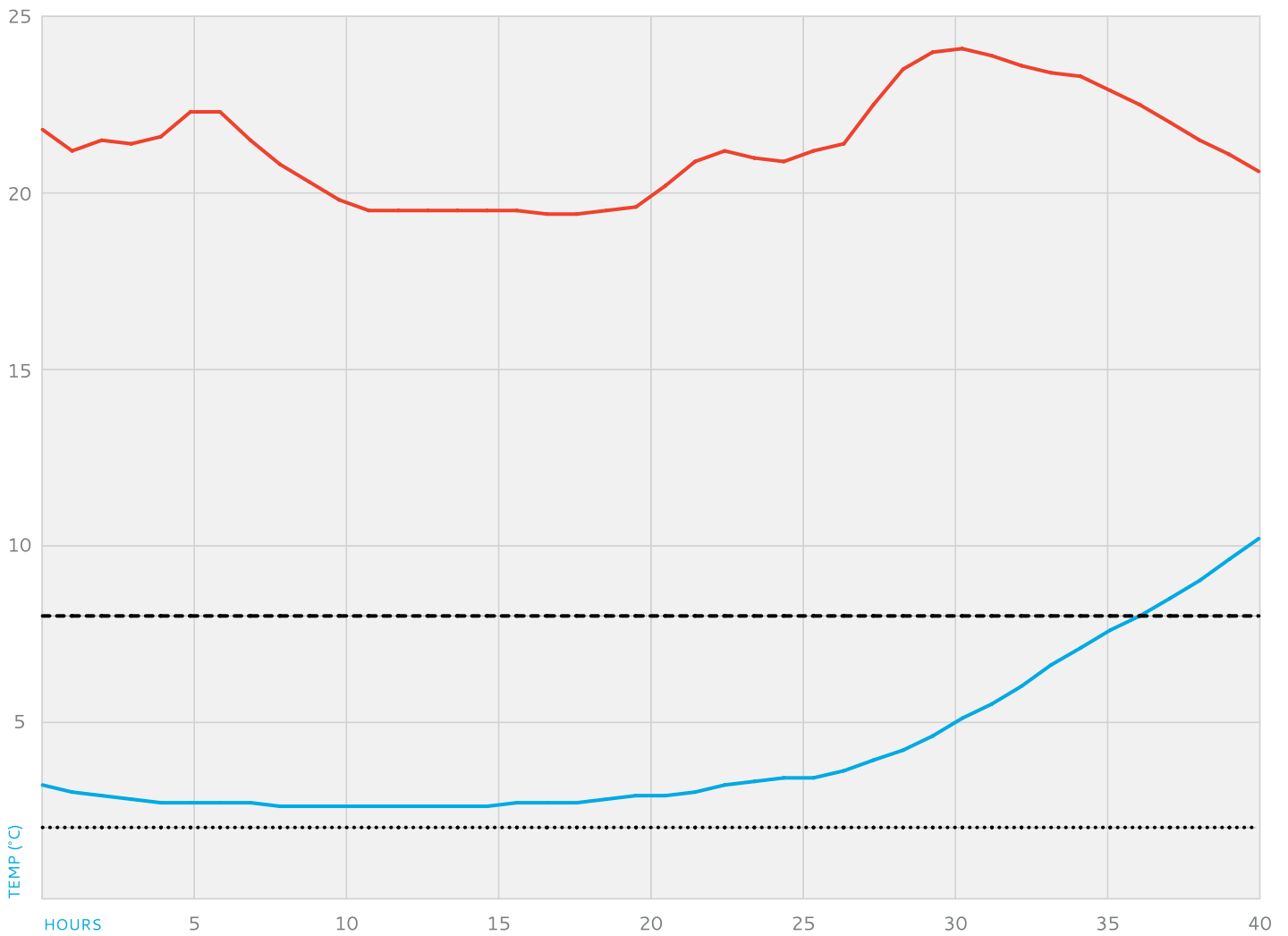


2 X 0.5L Easi-Chill

=

37
HOURS

Between 2°C – 8°C



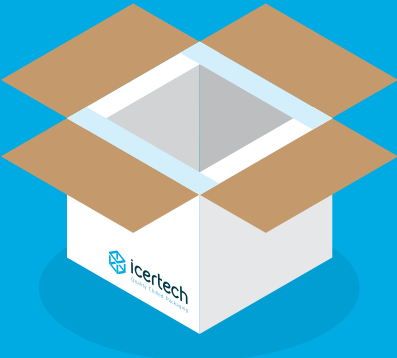
KEY

— Product Temperature — Room Temperature ···· Lower Control Temperature - - - Upper Control Temperature

SMALL INSULATED BOX

Average Room Temperature: 20.7°C

Product: 4 x 330ml Water Bottles



Small Insulated Box

+

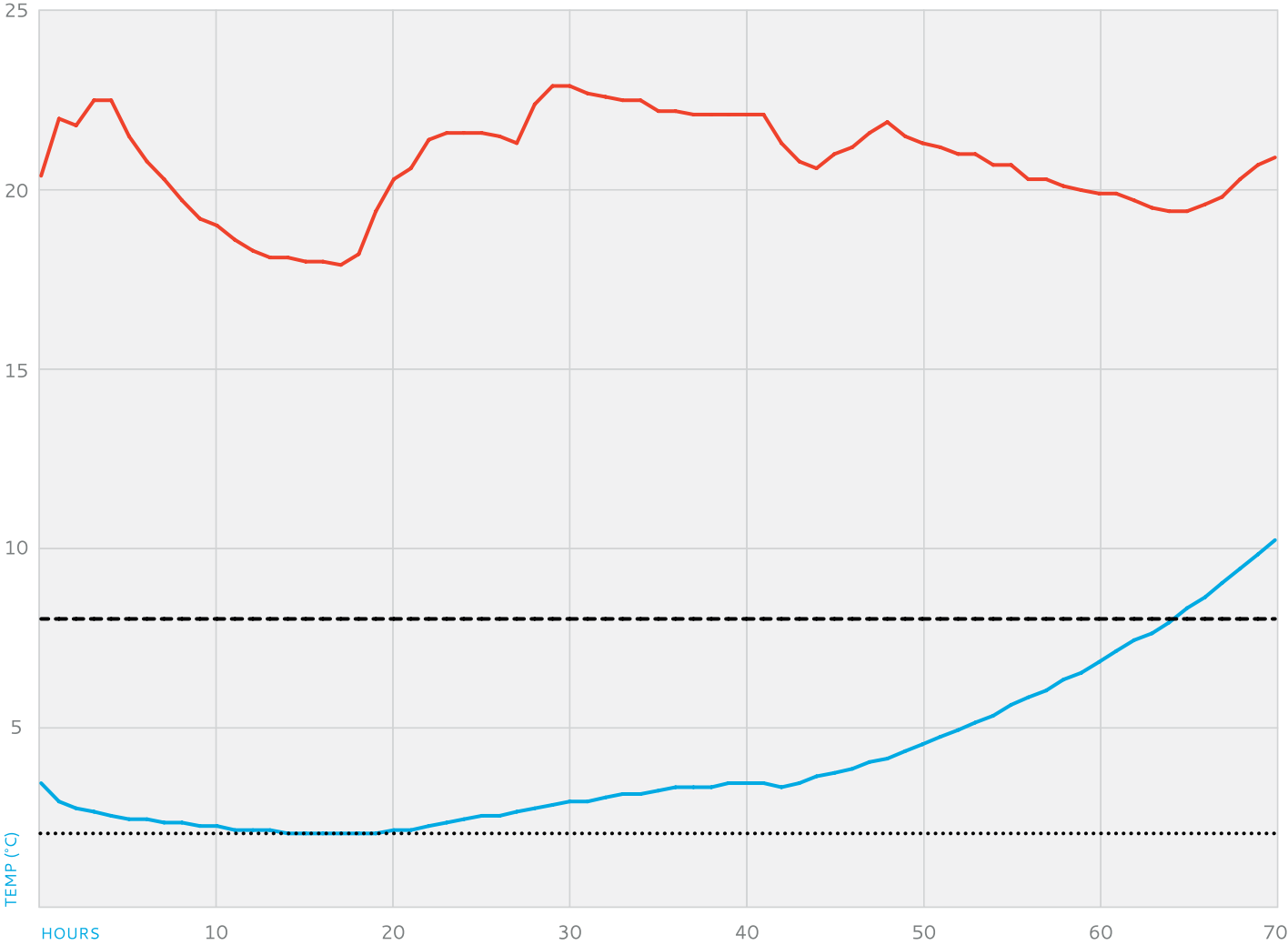


2 X 1L Easi-Chill

=

64
HOURS

Between 2°C – 8°C



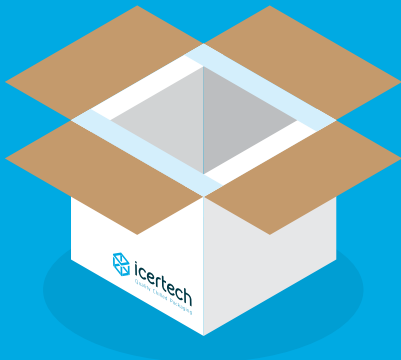
KEY

- Product Temperature
- Room Temperature
- Lower Control Temperature
- Upper Control Temperature

MIDI INSULATED BOX

Average Room Temperature: 20.6°C

Product: 6 x 330ml Water Bottles



Midi Insulated Box

+

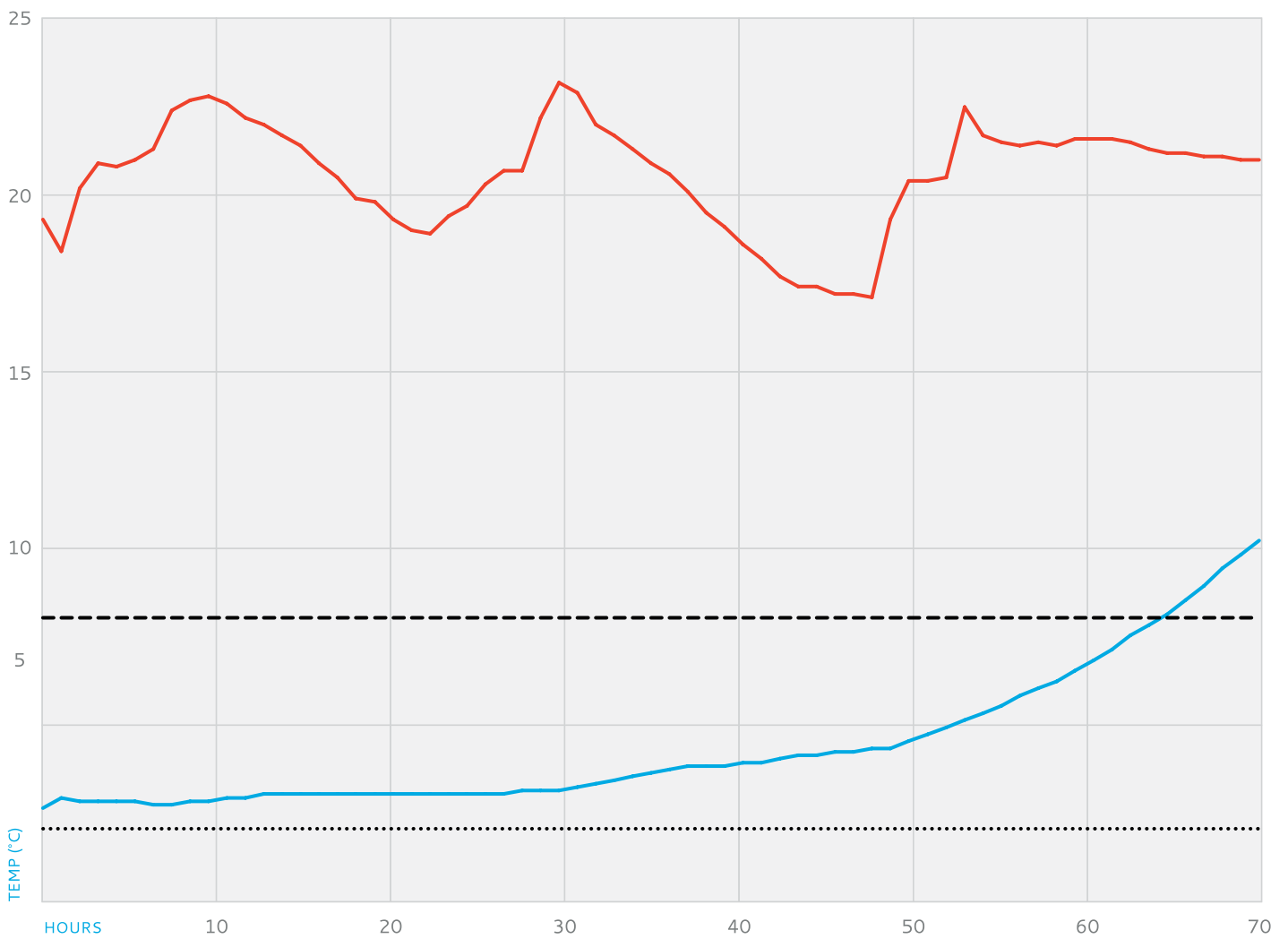


2 X 1L Easi-Chill

=

60
HOURS

Between 2°C – 8°C



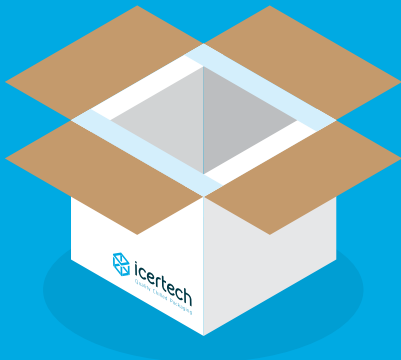
KEY

— Product Temperature — Room Temperature ···· Lower Control Temperature - - - Upper Control Temperature

MEDIUM INSULATED BOX

Average Room Temperature: 21.1°C

Product: 12 x 330ml Water Bottles



Large Insulated Box

+

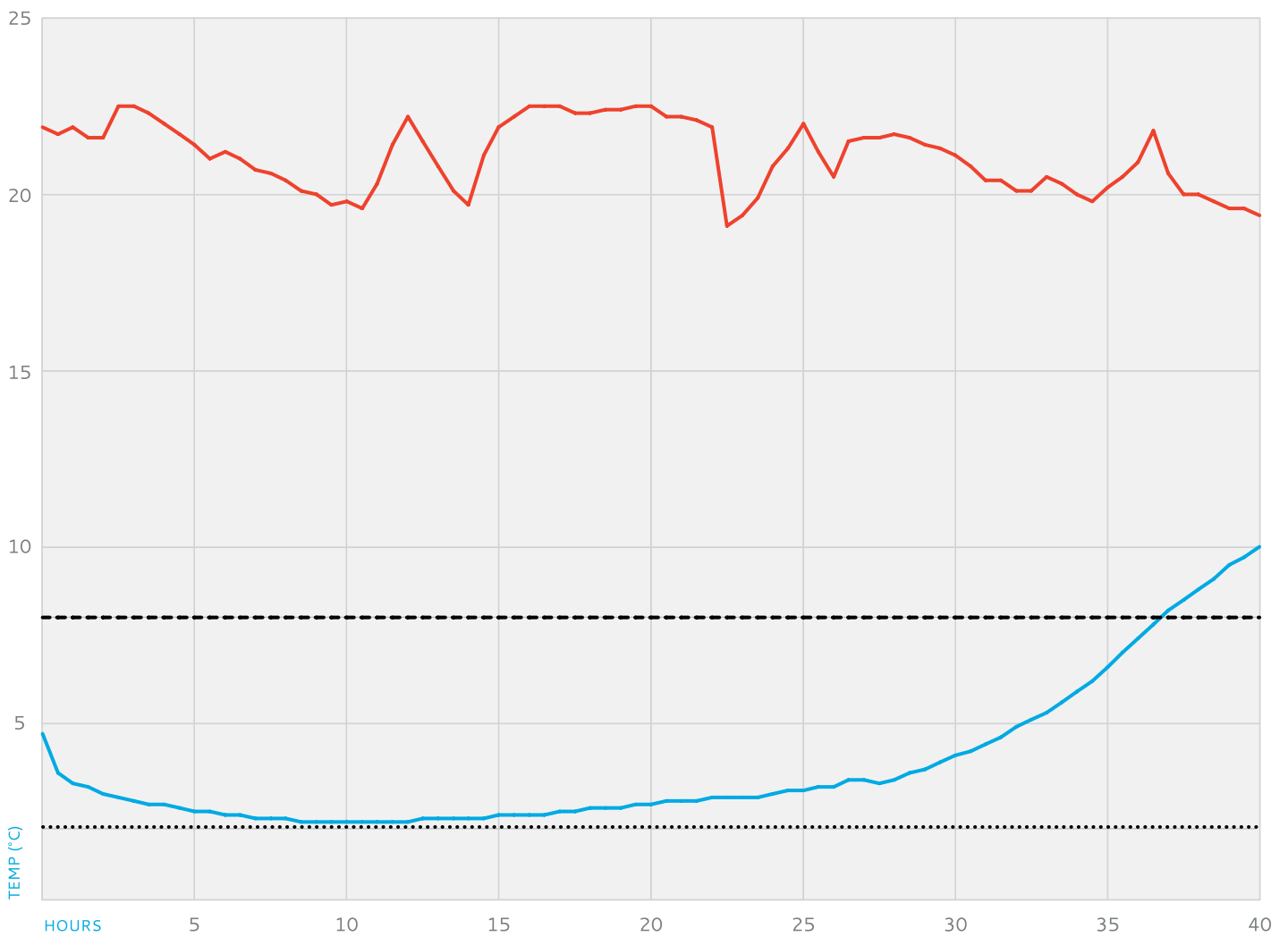


4 X 1L Easi-Chill

=

73
HOURS

Between 2°C – 8°C



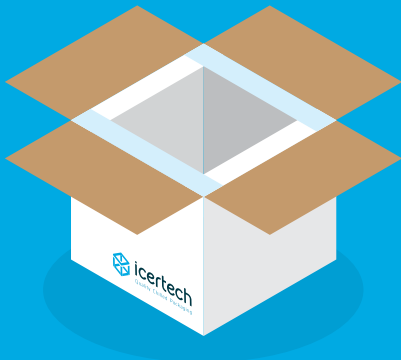
KEY

— Product Temperature — Room Temperature ••• Lower Control Temperature - - - Upper Control Temperature

LARGE INSULATED BOX

Average Room Temperature: 20.9°C

Product: 18 x 330ml Water Bottles



Large Insulated Box

+

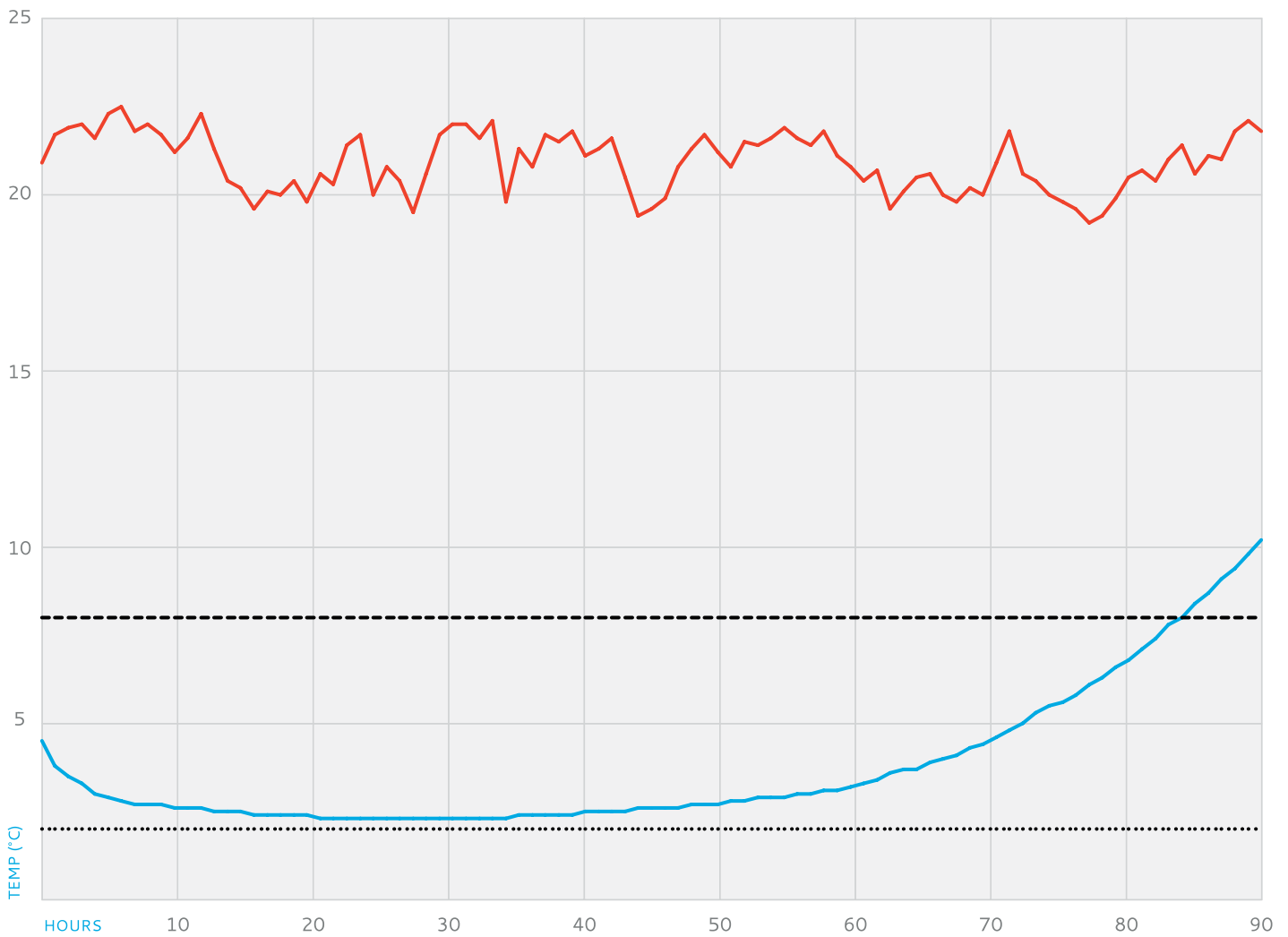


6 X 1L Easi-Chill

=

86
HOURS

Between 2°C – 8°C



KEY

- Product Temperature
- Room Temperature
- Lower Control Temperature
- Upper Control Temperature



W. www.icertech.co.uk

E. sales@icertech.co.uk

T. 01978 661 247

F. 01978 660 373

Clywedog Road South
Wrexham Industrial Estate
Wrexham, LL13 9XS